



Autobank XLViP Bill Validating Safes  
with CT8016 Control Panel Electronics

# INSTALLATION & SETUP INSTRUCTIONS

## STEPS TO SUCCESSFUL AND COMPLETE INSTALLATION:

- |    |                             |    |                                    |
|----|-----------------------------|----|------------------------------------|
| 1  | Preparation & Requirements  | 12 | Test Doors                         |
| 2  | Gather Critical Information | 13 | General Settings   General         |
| 3  | Unpack                      | 14 | General Settings   Headers/Footers |
| 4  | Bolt Holes                  | 15 | General Settings   Regional        |
| 5  | Bolt Down                   | 16 | General Settings   Local Net       |
| 6  | Internet Test               | 17 | General Settings   Supervisions    |
| 7  | Cellular Components         | 18 | Setup   Test Supervision   EDGEiP  |
| 8  | Removable Validator Head    | 19 | Set Commercial State               |
| 9  | Printer Paper               | 20 | First EDGEiP Supervision           |
| 10 | Electrical Connections      | 21 | Demonstrate Operation              |
| 11 | Initialization              | 22 | Change ADMIN PIN.                  |



a member of FireKing® Security Group  
101 Security Parkway  
New Albany IN 47150  
Phone 800-528-9900 / 812-948-8400  
www.fireking.com

©2008 FireKing® Security Group  
Autobank with AuditLok® XLViP Electronics

*NKL,® Autobank,® and AuditLok® are trademarks of FireKing® Security Group.  
Other trademarks are property of their respective companies.*

# 1 PREPARATION & REQUIREMENTS

Before installing, make sure there is adequate clearance for the body and base of the safe as well as proper electrical power.

## CLEARANCE REQUIREMENTS

Clearance must be provided in order to access electrical connections and to allow the door to open fully for validator cassette removal.

- 32 Inch height (under counter).
- 4 Inches hinge side clearance.
- 6 Inches rear clearance.
- 170° Door swing clearance.

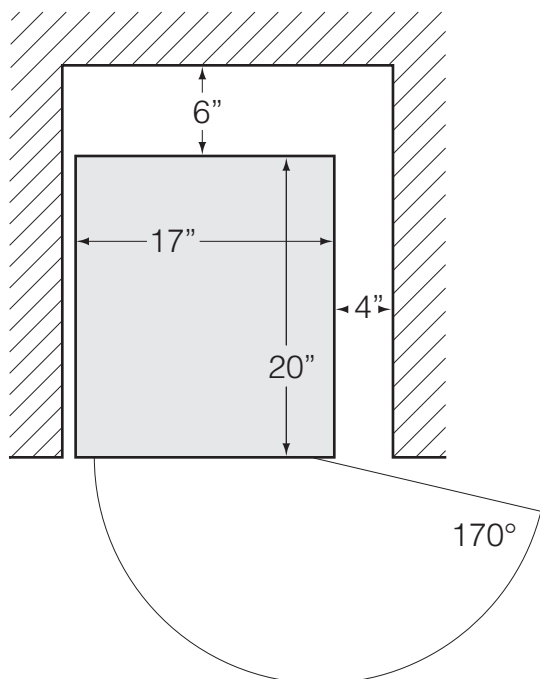


Fig. 1 Minimum Clearances (V2 Footprint Shown)

## POWER REQUIREMENTS

A dedicated 15 amp 115 V<sub>AC</sub> grounded outlet must be provided within 6 feet of the safe. The unit may share its AC circuit with other point of sale electronic equipment, but must not be on the same circuit as rotating machinery such as a cooler or other refrigeration equipment.

- Dedicated 115 V<sub>AC</sub> grounded outlet within six feet of hinge side of safe.
- No rotating or heavy loads on the same outlet.
- Do NOT connect other loads to the safe's surge protector or UPS.
- Use only the power supplies provided with your safe. Using an incorrect power supply will cause component failure.

## WARNINGS

The following items are critical to safety, security and proper operation of the completed installation.

- Do not touch exposed electronics.
- Service, including bolting down to the floor, should only be provided by authorized personnel.
- The use of a grounding strap is required when in contact with internal electronic components to prevent damage to components.
- Follow all installation and programming procedures carefully.
- Do not attempt to enroll any users on the safe until all other programming is complete.

## READ AHEAD

There are many variables involved in installation. It is critical that you read ahead so that you are prepared for upcoming steps.

- In order to ensure success please read this document completely before beginning.
- Follow all installation and programming procedures carefully!
- **Installation is not complete until the safe is bolted down and all configuration setup is complete.**

## REMOVAL OF OLD SAFE

Old safe removal must be accomplished before installing the new safe if it is to be installed in the same location.

# 2 GATHER CRITICAL INFORMATION

Certain information must be provided by the dispatcher or the customer. If this information is not provided with the installation work order contact the installation dispatcher as needed to assist in gathering the information.

1. **EDGEiP via cellular phone** (values shown in parenthesis should be used if the SIM card is provided by FireKing; use information provided by the customer if they provide the SIM card):
  - a. ISP Phone Number (#99#)
  - b. APN (wap.cingular)
  - c. ISP USER (WAF@CINGULARGPRS.COM)
  - d. ISP Password (CINGULAR1)
2. **EDGEiP via network** (this information must be provided by the customer; do not connect the safe to the customer network without knowing and setting these values).
  - a. DHCP
  - b. IP Address
  - c. Subnet
  - d. Gateway
3. Time to run **End Day** and whether automated.
4. **System ID / POS ID** (System ID must be provided by your factory dispatcher because this value must match the factory database to enable connection to the EDGEiP server; POS ID should be set to match System ID).

### 3 UNPACK

The safe will ship bolted to its pallet and locked open with rubber stops in the door to prevent accidental closure.

1. Remove wrapping material from the safe.
2. Unpack, inventory and identify each item shipped with the safe. The inventory you receive depends on the safe model and may include anchor kit, power supply, UPS or surge protector, validator heads, validator cassettes, data cable, control module, documentation, stickers, etc.
3. Remove the lag bolts holding the safe to the pallet.
4. Remove the safe from the pallet.

### 4 BOLT HOLES

**WARNING: Observe all clearance and power requirements.**

1. Position the safe (or template) in the installation location.
2. Mark the mounting hole locations on the floor.
3. Remove the safe (or template) and set aside.
4. Drill four 1/2 inch holes to a depth of 3 inches. The holes must be clean. Use a vacuum to clean the holes. *Do not use water to clean the holes.*

### 5 BOLT DOWN

Depending on the situation you may want to wait and bolt the safe down after completing all wiring and verifying door operation. This is the installers discretion.

1. Position the safe so that the bolt-holes align with the holes drilled in the floor.
2. Drive each anchor wedge (Fig. 2) in until at least 1/4 inch to no more than 1 inch of the top protrudes through the floor of the safe.
3. Slide the washers down over each anchor wedge.
4. Put the nuts on each anchor wedge by hand until finger tight. Turn approximately three to four full turns by wrench to complete the tightening.

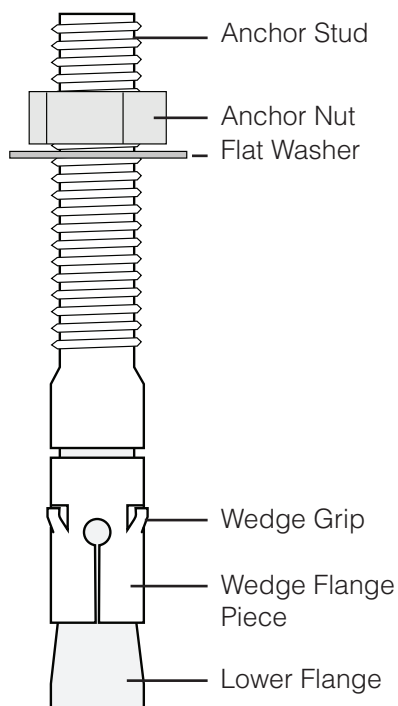


Fig. 2 Anchor Wedge

### 6 INTERNET TEST

**If the safe will connect to the EDGEiP server via network:**

Before connecting the safe to the LAN and doing the network setup required in later steps, connect your laptop to the store LAN using the cable that will be connected to the safe. Test the internet connection and ping the EDGEiP server. If the connection fails this will allow time for the customer to contact their network administrator to assist in solving the problem before you reach the last installation steps.

1. Connect your laptop to the safe's Ethernet cable.
2. Open a DOS Command Prompt.
3. At the prompt type "ping 206.196.5.167" then hit enter.
4. **If you are unable to successfully ping the server, get the network administrator involved immediately.** In most cases the network problem can be resolved while you complete the installation. Verify that you have the required TCP/IP settings for the safe: DHCP or IP Address, Subnet, and Gateway. If the problem cannot be resolved through the Network Administrator while you are on site contact the factory dispatcher immediately.

### 7 CELLULAR COMPONENTS

**If the safe will connect to the EDGEiP server via cellular phone:**

1. Connect the antenna cable to the antenna port on the rear of the display panel (Fig. 3).
2. Install the cellular phone SIM card into the SIM port at the rear of the display panel (Fig. 3).

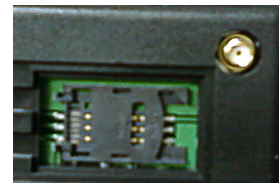


Fig. 3 SIM Card Port & Antenna Conenctor

### 8 REMOVABLE VALIDATOR HEAD

Depending on the safe model, validator head may be removable and, if so, they are shipped in a separate package (not installed in the safe chassis). Unpack the validator heads. Slowly insert the validator heads into the openings in the front of the safe. Each head should lock into place when fully inserted.



Fig. 4 Example - JCM Bulk Validator Head Shown

## 9 PRINTER PAPER

1. Remove the printer cover by pressing lightly and pushing toward the back (Fig. 5).
2. Remove the roller from the printer (Fig. 6).
3. Insert the new roll, checking to see that the paper always comes from underneath (only one side of the paper is usable; Fig. 7).
4. Replace the roller in the printer. Make sure that sufficient paper is left to pass it through the slot of the printer cover (Fig. 8).
5. Replace the printer cover (reverse the process described in step 1).
6. Press the paper advance button to verify that the new roll is installed correctly.



Fig. 5 Press and push to remove cover



Fig. 6 Remove the roller



Fig. 7 Roll from beneath, replace roller

## 10 ELECTRICAL CONNECTIONS

1. Connect the UPS (or surge protector) to a dedicated AC outlet.  
**Note: Some UPS devices require some setup. Refer to instructions supplied with your UPS.**
2. Connect the safe power supply to the UPS (or surge protector).
3. Feed the safe power supply cable through cabinet openings as needed and connect to the "SAFE POWER" port (Primary Side) on the rear of the safe (Fig. 8).  
**Note: Validators will flash and stack several seconds after power is applied. Exact behavior will depend on which model validators are used.**
4. Feed the alarm cable through cabinet openings as needed and connect to the "ALARM" port on the rear of the safe (Fig. 8).  
**Note: It is the responsibility of the alarm company to connect the alarm cable to the alarm system.**
5. Feed the data cable through cabinet openings as needed and connect to the "DISPLAY PANEL" port (Primary Side) on the rear of the safe (Fig. 3). Connect the other end to "PORT 1" on the rear of the control panel (Fig. 9).

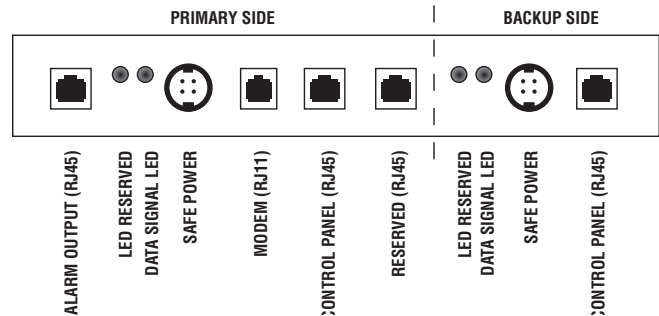


Fig. 8 Safe Rear Panel



Fig. 9 Control Panel (Rear Connector Area)

## 11 INITIALIZATION

1. Turn on the display panel (switch is located on the rear panel of the display; Fig. 9).
2. After fully initializing the display will go into continuous tone alarm due the doors being open. Ignore this alarm. The data signal LED on the rear of the safe will begin to blink once the display and internal safe electronics begin to communicate normally.

## 12 DOOR OPERATIONAL TEST

**WARNING: Test each safe door for proper operation before physically closing it. Do not remove rubber door stops until the corresponding door lock has been tested.**

1. Enter "1111" for Personal ID.
2. Enter "1111" for PIN.
3. Select login.
4. Select menu.
5. Choose Door Access.
6. Select select.
7. Choose Validated Door.
8. Select enter.
9. If asked whether to remove cash select NO.
10. Enter "1111" for Personal ID.
11. Enter "1111" for PIN.
12. Turn the handle to unlock the door.
13. Remove the rubber stoppers from the door frame.
14. Close the validator compartment door.
15. Repeat above steps for the manual drop compartment.

## 13 GENERAL SETTINGS | GENERAL

Configure a wide variety of general reporting options as follows:

1. Enter "1111" for Personal ID.
2. Enter "1111" for PIN.
3. Select login.
4. Select menu.
5. Choose General Settings,
6. Select select.
7. Choose General,
8. Select select.
9. To edit select update. To advance to the next option press **DOWN**. After all edits select save.
10. Configure General settings as follows (unless requested otherwise by the customer):
  - a. Copies of each reports (except Deposit): 1
  - b. Copies of Deposit Report: 2
  - c. Use References: No
  - d. Ask Envelope Number: No
  - e. Ask Quantity in Manual: No
  - f. Ask Apply To: No
  - g. Autoprint End Day: Yes
  - h. End Day Time: 00:15
  - i. Operator Report: Always
  - j. POS ID: Set same as System ID (refer to Section 4, step 4)

## 14 GENERAL SETTINGS | HEADERS/FOOTERS

Configure headers and footers as follows:

1. Enter "1111" for Personal ID.
2. Enter "1111" for PIN.
3. Select login.
4. Select menu.
5. Choose General Settings,
6. Select select.
7. Choose Headers,
8. Select select.
9. To edit select update. To advance to the next header press **DOWN**. After all edits select save.
10. In header fields add the full store name, number, address, and phone number. Clear unused header fields.
11. Repeat this procedure for Footers (select Footers in Step 7). Add any additional store information requested by the customer. Suggested information includes manager name, web site, armored car service, etc. Clear unused footer fields.

## 15 GENERAL SETTINGS | REGIONAL

Set the clock as follows:

1. Enter "1111" for Personal ID.
2. Enter "1111" for PIN.
3. Select login.
4. Select menu.
5. Choose General Settings,
6. Select select.
7. Choose Regional,
8. Select select.
9. To edit select update. To advance to the next option press **DOWN**. After all edits select save.
10. Set the local date and time (24-hour format).

## 16 GENERAL SETTINGS | LOCAL NET

Complete this procedure if the safe will use a network connection for EDGEiP communication.

**WARNING: Safe TCP/IP settings must be set as directed by the customer's network administrator. DO NOT CONNECT THE SAFE TO THE CUSTOMER NETWORK UNTIL THE SAFE TCP/IP SETTINGS ARE CORRECT.**

Set the safe TCP/IP options as follows:

1. Enter "1111" for Personal ID.
2. Enter "1111" for PIN.
3. Select login.
4. Select menu.
5. Choose General Settings,
6. Select select.
7. Choose Local Net,
8. Select select.
9. To edit select update. To change a value in brackets press **LEFT** or **RIGHT**. To advance to the next option press **DOWN**. After completing all edits select save.
10. Set DHCP, Equipment IP, Subnet and Gateway.

## 17 GENERAL SETTINGS | SUPERVISIONS

Configure EDGEiP communication (supervision) as follows:

1. Enter "1111" for Personal ID.
2. Enter "1111" for PIN.
3. Select login.
4. Select menu.
5. Choose General Settings.
6. Select select.
7. Choose Supervisions.
8. Select select.
9. Choose EDGEiP.
10. Select select.
11. To edit select update. To advance to the next option press **DOWN**. After all edits select save.
12. Configure the following EDGEiP Supervision options (do not attempt to change any options except those listed here):
  - a. System ID: (Set per dispatcher instructions)
  - b. Connect by: LAN (network connection) or GPRS (cellular phone connection)
  - c. ISP Phone Number (GPRS only): #99#
  - d. APN (GPRS only): wap.cingular
  - e. ISP User (GPRS only): WAP.CINGULARGPRS.COM
  - f. ISP Password (GPRS only): CINGULAR1
  - g. COM Port (GPRS only): MODEM
  - h. Baud (GPRS only): 19200
  - i. Inform Drops Immediately: YES
  - j. Inform Deposits Immediately: YES
  - k. Inform Alarm Immediately: YES

## 18 SETUP | TEST SUPERVISION | EDGEiP

Perform this supervision test. If there is a problem with the network or cellular connection (whichever is applicable), you will know and be able to correct the problem. If the supervision test fails and you are not able to determine the cause, contact your installation dispatcher immediately. Perform the supervision test as follows:

1. Enter "1111" for Personal ID.
2. Enter "1111" for PIN.
3. Select login.
4. Select menu.
5. Choose Setup.
6. Select select.
7. Choose Supervision Test.
8. Select select.
9. The safe will initiate a communication test to check to see if it is possible to connect to the EDGEiP server. A report should print within a few minutes. The report will indicate if the connection was successful. If not, contact your installation dispatcher immediately if you are unable to quickly find and solve the problem on your own.

## 19 COMMERCIAL STATE

**WARNING: Commercial state can only be changed by connecting to the EdgEP server. Once set to a "Production" mode it should never be changed again or all financial and configuration data will be lost.**

Set Commercial State as follows:

1. Enter "1111" for Personal ID.
2. Enter "1111" for PIN.
3. Select login.
4. Select menu.
5. Choose Commercial State.
6. Select select.
7. At the first screen select OK.
8. Select update.
9. Press **LEFT** or **RIGHT** until PRODUCTION PIMS appears in the brackets.
10. Select save.
11. After several seconds a brief report should print indicating Commercial State was successfully changed.

## 20 FIRST SUPERVISION

The first actual supervision event must be initiated manually. After this is done the safe will initiate supervision automatically each day. Manually initiate the first safe supervision event as follows:

1. Enter "1111" for Personal ID.
2. Enter "1111" for PIN.
3. Select login.
4. Select menu.
5. Choose Supervision.
6. Select select.
7. Choose EDGEiP.
8. Select select.
9. Select YES.
10. After several seconds a brief report should print indicating supervision was successful.

## 21 DEMONSTRATE OPERATION

Using the Autobank XLVIP Store Manual, demonstrate basic operation to the store management including enrolling the Store Manager and one employee, opening doors, and various ways to make validated and manual drops. Turn over the Store Manual and all other documents related to operation to the store manager. You (the installer) should retain these Installation Instructions.

## 22 CHANGE ADMIN PIN

Change the ADMIN user PIN to the final ADMIN PIN as directed by the factory installation dispatcher (see work order instructions). Do not leave USER 1111 set to PIN 1111. Do not give the new ADMIN PIN to store personnel. Refer to the store manual for detailed instructions to change this PIN.