



# SMARTLINC

## Multiple Lock System

### LOGIC MODULE & LOCK SET-UP INSTRUCTIONS



Optional  
eKey<sup>II</sup>  
P/N 40169

#### AVAILABLE FEATURES

##### MASTER CODE (Factory set to 1-2-3-4-5-6-7-8)

- Change Code
- Enroll/Delete Locks
- Install/Delete Manager
- Set Lock Options
- Reprogram Software
- Access to Master Menu
- Download Audit
- Set Time Lock Periods

##### MANAGER CODE (Factory set to 1-1-1-1-1-1)

- Manages Users
- Change Time Delay Values
- Download Audit
- Control Temporary Time Lock
- Extend Open Period, *if enabled*

##### USER CODE

- Up to nine users per lock, including Manager
- Open Lock
- Change Code
- Set Immediate Lock

##### MULTIPLE LOCKS

- Up to Five

##### APB (Auxiliary Power Box)

- Must be ordered with every system no matter how many locks are enrolled
- Provides constant power to audit information in the event of primary (battery or A/C) power loss

#### TIME DELAY

- Programmable on each lock
- Delay Period: 1 - 99 minutes
- Open Period: 1 - 19 minutes
- Delay Counting mode selectable (up, down or invisible)
- Two Time Delays Can Run At Once

#### TIME DELAY OVERRIDE

- Ability to override time delay
- Assigned to User #9, if enabled

#### SILENT SIGNAL ALARM (Optional Alarm Box Required)

- Programmable on each lock

#### REMOTE DISABLE (Optional Alarm Box Required)

- Programmable on each lock

#### AUDIT

- Each Lock will record the last 500 operations with time, date, user and description of activity

#### DUAL CODE

- Programmable on each lock
- If set-up automatically installs User #2  
(Default User Code 2-2-2-2-2-2)
- Two Codes required to open and access Manager Menu

#### eKEY<sup>II</sup> MODE

- Available on each lock, if enabled
- Available for Manager and Users only

#### WRONG TRY PENALTY

- Four (4) consecutive invalid codes initiates five-minute delay period

#### LOW BATTERY WARNING

- Repeated audio and visual signal (LCD readout and repeated beeping) during opening indicates battery low

#### AUDIO AND VISUAL SIGNAL

- Double signal (LCD readout and unit beeps) indicates entry is valid or accepted
- Triple signal indicates invalid or not accepted

#### TIME LOCK

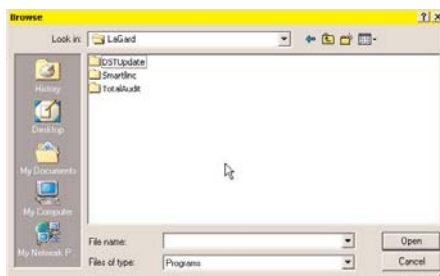
- Two Time Lock periods are available for set-up
- Selectable for each lock - Time Lock 1, Time Lock 2 or No Time Lock
- Standard Week (4 open periods per day)
- Special Events (Up to 20 close periods programmable with day and month) [i.e., January 1, July 4]
- Immediate Time Lock (From now until next available open period)
- Temporary Time Lock (From now to required date and time, maximum of four (4) weeks)
- Time Lock Open Period Extension (Maximum two (2) hours), if enabled
- Daylight Saving Time

#### SYSTEM RECOMMENDATION

- LA GARD recommends running the SMARTLINC software on a PC or Laptop running Windows® 2000 or higher

## Opening SMARTLINC Set-up Software

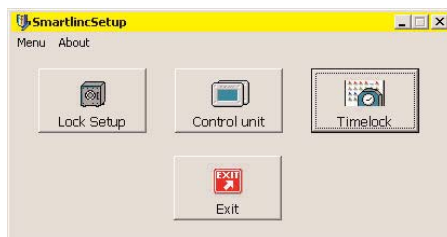
Once all of the software has been installed on the computer, it is time to begin setting up the Logic Module and lock(s). Open the set-up software. Using either windows explorer or the START button, find the LA GARD folder on the hard drive. Within the LA GARD folder there are 3 folders labeled DSTUpdate, SMARTLINC and Total Audit. Open the SMARTLINC folder and double click on the file named SMARTLINCSETUP, *see screen 1*.



Screen 1

## SMARTLINC Set-up Software

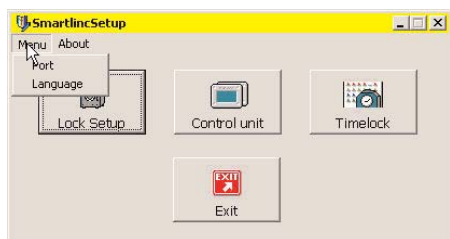
The opening window of the set-up software allows the choice of Lock Set-up, Control Unit (Logic Module) Set-up, Time Lock Set-up and Exiting the Set-up software, *see screen 2*.



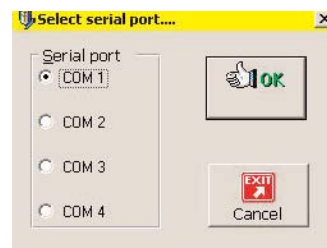
Screen 2

## COM Port Set-up

The COM port must be selected before beginning set-up. Select the appropriate COM port from the Port Menu. The default is COM 1, *see screens 3 & 4*.



Screen 3



Screen 4

## LOCK SET-UP

To set-up the locks, click on the Lock Set-up button on the opening screen, *see screen 2*. A window with the default configuration will appear, *see screen 5*. In this window select the features to be enabled on the locks.

- **Select the lock ID for the lock to be programmed.** LA GARD recommends marking the lock itself with its ID number.
- Each lock can be assigned a serial number in this window. By checking this box, there is the option of entering a Fixed Field, which is alphabetical and a Variable Field, alphanumeric only. If entered, this information will be shown on the audit.
- If Dual Code is installed, User #2 is automatically installed, *see screen 6*. If installed, two codes will be required not only to open the lock, but to access the Manager Menu options as well.
- Users can only be configured on the Logic Module if they have been set-up as Deleted in this window. A deleted user is a user number ready for installation, a blocked user is a user number that will be unavailable for installation. Installed is an automatic feature available only for User #2 when setting the unit up in Dual Code.
- Time Delay open window and delay times may be set-up in this window or from the Logic Module.
- If, when installed, there is a lock that will take longer than 4 seconds to reach and open, LA GARD recommends the use of the Open Device. The Open Device will hold the signal going to the lock for one (1) minute or until the outer door has been opened and the Open Device depressed.

### NOTE: Open Device and Duress Alarm cannot work at the same time.

- Once all of the features for this lock have been selected, save the set-up to a file for later use. If a file has already been saved file, it may be opened from this window as well.

**Lock**

Mode  
 Duress alarm  
 Dual combo  
 Override  
 Open Device

SN #  
 Active  
 Fixed:   
 Var.: 00000000

ID # 01

Time delay  
 Delay: 0 min.  
 O.W.: 1 min.

Master 12345678

#	Status
Manager	1-1-1-1-1-1
2	Deleted
3	Deleted
4	Deleted
5	Deleted
6	Deleted
7	Deleted
8	Deleted
9	Deleted

Open Save Send Close

Screen 5

**Lock**

Mode  
 Duress alarm  
 Dual combo  
 Override  
 Open Device

SN #  
 Active  
 Fixed:   
 Var.: 00000000

ID # 01

Time delay  
 Delay: 0 min.  
 O.W.: 1 min.

Master 12345678

#	Status
Manager	1-1-1-1-1-1
2	Installed
3	Deleted
4	Deleted
5	Deleted
6	Deleted
7	Deleted
8	Deleted
9	Deleted

Open Save Send Close

Screen 6

### SENDING SET-UP TO THE LOCK

This function requires the use of the Lock Programming Cable (P/N 43098) and a Serial Interface Connector.

- Connect power to the lock via the logic module or small/large battery box through the port on the lock marked BAT. LA GARD recommends the use of Duracell™ or Eveready™ batteries, see figure 1.
- Plug Interface and cable into PC and open SMARTLINC Set-up software.
- Plug the 43098 cable into the lock through the port on the lock marked ENT.
- Select the lock ID for the lock to be programmed.** It is a good idea to mark the lock itself with it's ID number.
- Press the send button on the software and then the Start button, see screen 7.
- On the screen the software will scroll through each Record number (1 - 12) as it downloads to the lock, then it will show OK.
- Repeat steps 3 - 6 for each lock to be programmed with this configuration.

**NOTE: If the computer does not have a serial port, a serial to USB connector will be required.**

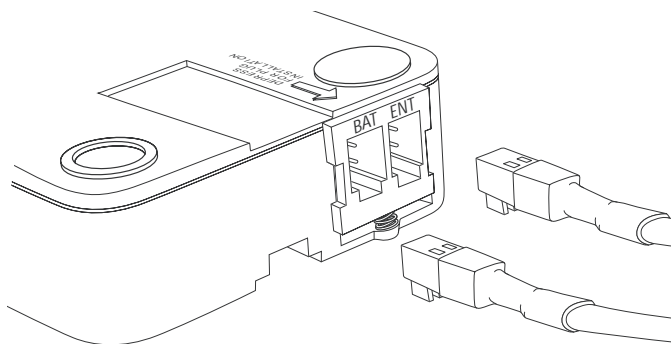


Figure 1

**Lock setup**

Click on the **START** button to send configuration

START New Record #  Close

Screen 7

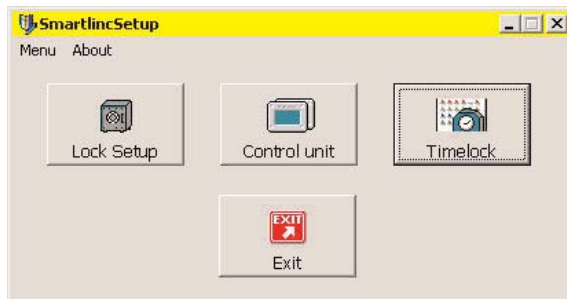
## CONTROL UNIT (LOGIC MODULE) SET-UP

To set-up the logic module, click on the Control Unit Set-up button on the opening screen, *see screen 8*. A window with the default configuration will appear, *see screen 9*. In this window select the features to be enabled on the logic module.

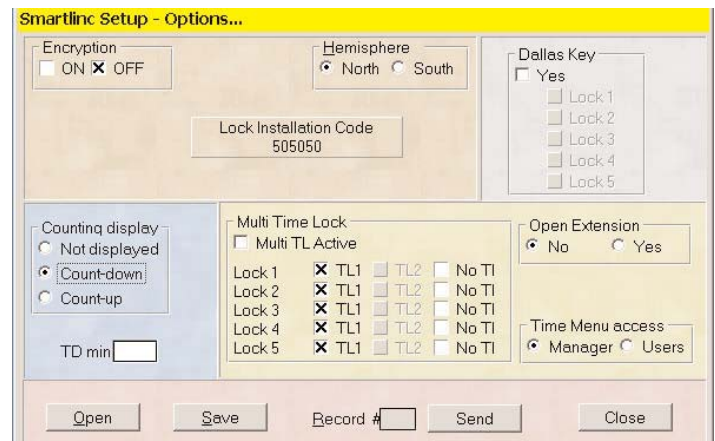
- Encryption can be set either ON or OFF. The default is set for OFF.

**CAUTION: If encryption is set ON, once the locks have been installed to this Logic Module, this will be the only Logic Module able to be used with these locks.**

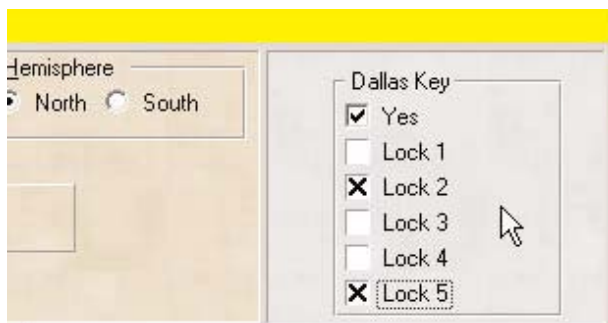
- Hemisphere is set with a default for NORTH. Select the Hemisphere where the units will be active.
  - The Dallas® key (eKEY<sup>II</sup>) option can be selected on this page. Check the YES box, then select which locks to set-up for use with eKEY<sup>II</sup>, *see screen 10*.
  - Delay Counting Display is set to a default of Countdown. The options are available to have Time Delay counting sequence Count Up, Count Down or Not Displayed.
  - The TD MIN window allows the entry of a minimum Time Delay value. Once this number is entered, Managers having access to the time menu will not be able to change the Time Delay value below this minimum delay period number. This feature will program ALL locks on the system that have a Time Delay set-up.
  - Multiple Time Lock periods are available by checking the box marked Multi TL Active, *see screen 11*. If there is no check in the Multi TL Active box, any time lock periods programmed will apply to all locks enrolled in the system. For a different Time Lock period to apply to a specific lock, check the Multi TL Active box. The locks enrolled in the system may be set to Time Lock period 1, 2 or no Time Lock at all.
  - Open Extension is set to default on NO. By selecting NO, no one will have access to the Open Extension Time Menu on the Logic Module. By selecting YES it allows the Manager and/or Users (as selected in the next option) to access the Time Lock Open Extension menu on the Logic Module. Those who have access can then extend the Time Lock Open Period in 30 minute increments, but no more than two hours or four (4) 30 minute increments.
  - Time Menu Access allows you to select whether both the Manager and the Users or the Manager only will have access to the Time Menu.
  - The Lock Installation Code (5-0-5-0-5-0) is used to enroll the locks to the Logic Module during System Set-up using the Master Menu on the Logic Module.
- Once all of the features for this lock have been selected, save the set-up to a file for later use. If a file has already been saved file, it may be opened from this window as well.



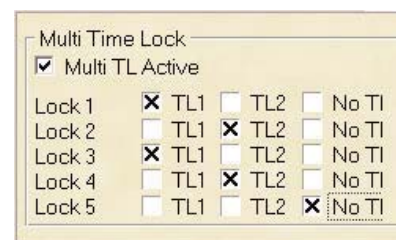
Screen 8



Screen 9



Screen 10



Screen 11

## SENDING SET-UP TO THE LOGIC MODULE

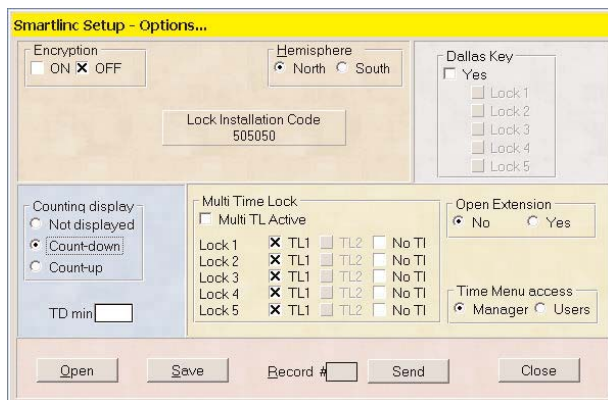
This function requires the use of the Logic Module Programming Cable (P/N 43097) and a Serial Interface Connector.

- ① Connect power to the Logic Module. Requires the use of a 9V battery. LA GARD recommends the use of Duracell™ or Eveready™ batteries.
- ② Plug Interface and cable into PC and open SMARTLINC Set-up software.
- ③ Connect the 43097 cable to the Logic Module through the port on the keypad.
- ④ Press the send button on the software, *see screen 12*.
- ⑤ The software will instruct you to activate the PC Link in the Master Menu on the Logic Module, *see screen 13*.

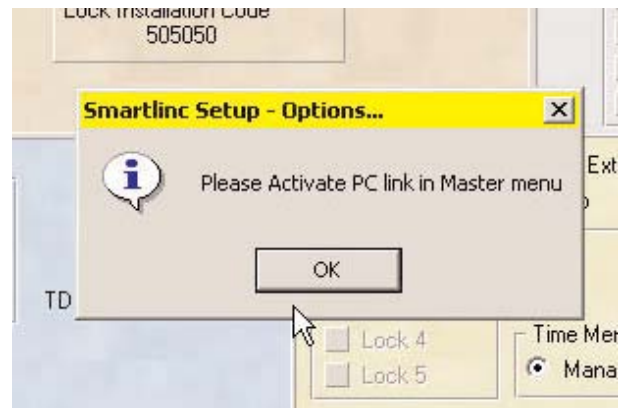
**NOTE: This reminder screen will display even if PC Link is already activated.**

- ⑥ Press any key to power up SMARTLINC.
  - Display will show either "ENTER COMBO" or SELECT LOCK" when two or more locks are installed.
- ⑦ Hold down "zero" until the display shows "MASTER, X-X-X-X-X-X-X".
- ⑧ Enter the MASTER code.
- ⑨ Press the P button four (4) times to select PC Link, the display will show "PC LINK". Press the OK button to start communication with the PC.
- ⑩ On the screen the software will scroll through each Record number as it downloads, then it will show OK.
  - In order to exit from PC Link, press the "P" button three (3) times. When the screen reads "Do you want to QUIT?", press the "OK" button to exit.

**NOTE: If the computer does not have a serial port, a serial to USB connector will be required.**



Screen 12



Screen 13

## DST (Daylight Savings Time) SET-UP

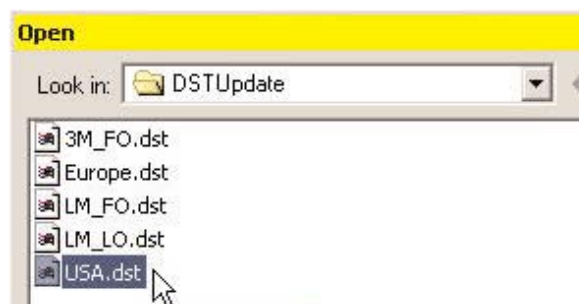
This function requires the use of the Logic Module Programming Cable (P/N 43097), PC, DST Update Software and a Serial Interface Connector.

- ① To set-up DST, click on the DST icon on the PC desktop. The set-up window will appear, *see screen 14*. In this window set-up the DST dates or select from the pre-set files available. A pre-set file has been created for the USA.
- ② Click File from the menu bar, then Open.
- ③ Select the file marked USA.DAT and click Open, *see screen 15*.
  - The dates will automatically be filled in for the next 15 years, *see screen 16*.

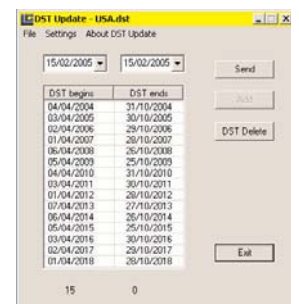
**NOTE: This program will also allow the DST file to be deleted from a previously programmed Logic Module in the event the Module must operate in a state not having DST.**



Screen 14



Screen 15



Screen 16

## SENDING DST (Daylight Savings Time) SET-UP TO THE LOGIC MODULE

This function requires the use of the Logic Module Programming Cable (P/N 43097), PC, DST Update Software and a Serial Interface Connector.

- ① Connect power to the Logic Module. Requires the use of a 9V battery. LA GARD recommends the use of Duracell™ or Eveready™ batteries.
- ② Plug Interface and cable into PC and then connect the 43097 cable to the Logic Module through the port on the keypad.
- ③ Press any key to power up SMARTLINC.
  - Display will show either "ENTER COMBO" or SELECT LOCK" when two or more locks are installed.
- ④ Hold down "zero" until the display shows "MASTER, X-X-X-X-X-X-X". Enter the MASTER code.
- ⑤ Press the P button four (4) times to select PC Link, the display will show "PC LINK".
- ⑥ Press the send button on the software.
  - In order to exit from PC Link, press the "P" button three (3) times. When the screen reads "Do you want to QUIT?", press the "OK" button to exit.

**NOTE: If the computer does not have a serial port, a serial to USB connector will be required.**

## TIME LOCK SET-UP

To set-up Time Lock, click on the Time Lock button on the opening screen, *see screen 8*. A window with the default configuration will appear, *see screen 17*. This window allows the set-up of Standard Week and Special Events Time Lock. It is possible to set-up two different Time Lock periods.

### STANDARD WEEK

- ① Select Time Lock 1.
  - By right clicking the cursor in the first line on the Standard Week screen select Add, Delete or Delete All, *see screen 18*.
- ② Select Add to set-up the first Time Lock period. MON from 08:00 to 08:00 will automatically be entered.
  - Clicking in the Day box, in either the Open or Closed area will bring a scroll menu to select the day of the week for the Time Lock period.
- ③ To enter the Open Time, highlight the Time box in the Open area and enter the time using a 24 hour clock.
- ④ To enter the Close time, highlight the Time box in the Closed area and enter the time using a 24 hour clock.
  - Once the first days Time values have been entered, you will be asked whether or not you wish to complete the rest of the week, *see screens 19 and 20*.

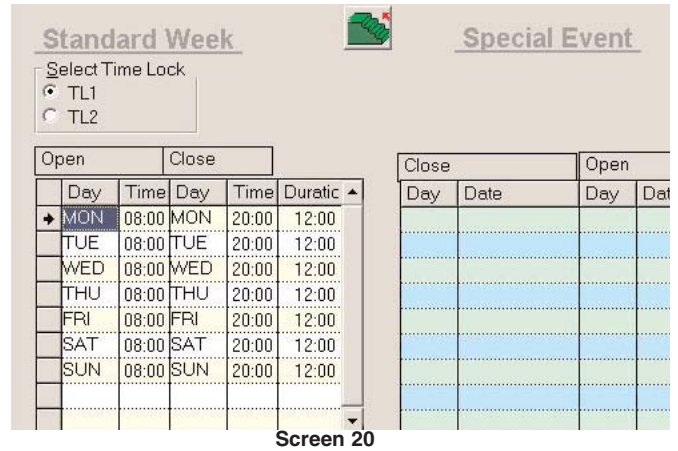
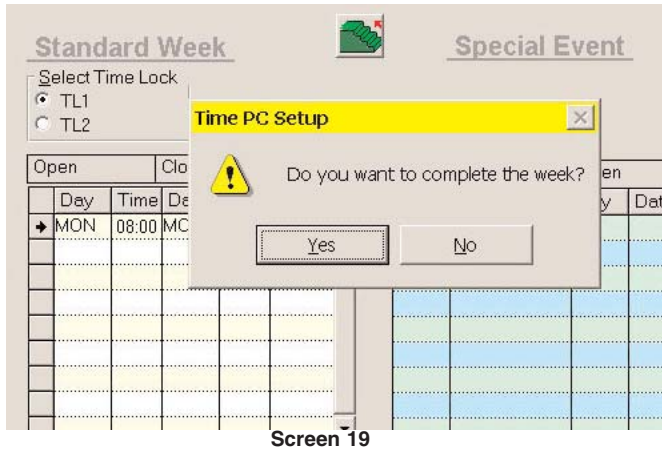
**NOTE: If the choice is made to not automatically complete the rest of the week, enter the daily Time Lock values in any day order and press the green step button to sort the records by day.**

- ⑤ Save this Time Lock configuration as Time Lock 1 and the company name.
- ⑥ Select Time Lock 2 and repeat steps ② - ⑤.

**CAUTION: Any day not completed will be considered a day in Time Lock and the units will be unavailable on that day.**

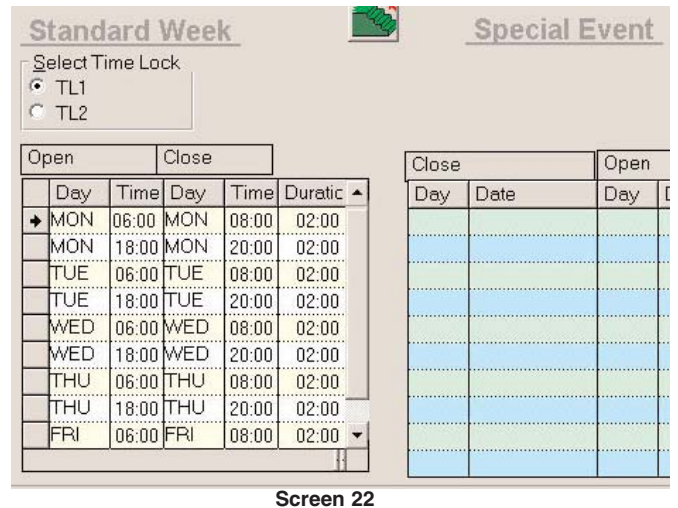
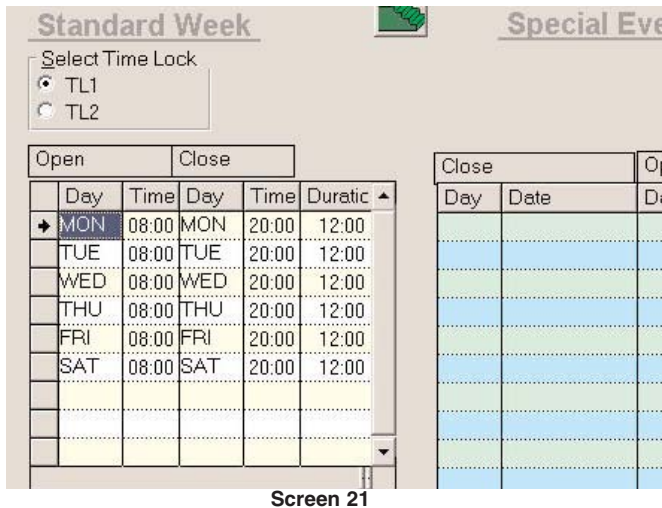
Screen 17

Screen 18



### TIME LOCK SET-UP EXAMPLES

- Lock available 7 days a week during business hours (in this case business hours are 8am to 8pm 7 days a week,) see screen 20.
- Lock available 6 days a week during business hours (in this case business hours are 8am to 8pm 6 days a week, closed on Sunday,) see screen 21.
- Lock set for multiple time lock periods in one day. Set for 5 days, closed Saturday and Sunday, see screen 22.

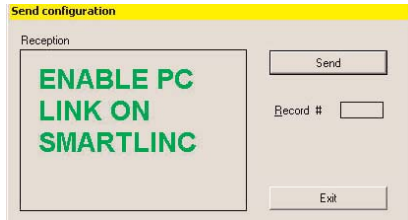


### SENDING TIME LOCK SET-UP TO THE LOGIC MODULE

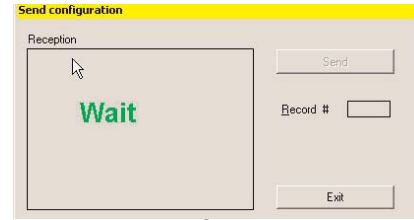
This function requires the use of the Logic Module Programming Cable (P/N 43097) and a Serial Interface Connector.

- ① Connect power to the Logic Module. Requires the use of a 9V battery. LA GARD recommends the use of Duracell™ or Eveready™ batteries.
- ② Plug Interface and cable into PC and open SMARTLINC Set-up software.
- ③ Connect the 43097 cable to the Logic Module through the port on the keypad.
- ④ Open the correct file for the Time Lock period (1 or 2) that will be downloaded to this lock.
- ⑤ Press the send button on the software, see screen 23.
  - The software will instruct you to activate the PC Link in the Master Menu on the Logic Module, see screen 23 & 24.
- ⑥ Press any key to power up SMARTLINC.
  - Display will show either "ENTER COMBO" or SELECT LOCK" when two or more locks are installed.
- ⑦ Hold down "zero" until the display shows "MASTER, X-X-X-X-X-X-X".
- ⑧ Enter the MASTER code.
- ⑨ Press the P button four (4) times to select PC Link, the display will show "PC LINK". Press the OK button to start communication with the PC.
- ⑩ On the screen the software will scroll through each Record number as it downloads, then it will show OK.
  - In order to exit from PC Link, press the "P" button three (3) times. When the screen reads "Do you want to QUIT?", press the "OK" button to exit.

**NOTE: If the computer does not have a serial port, a serial to USB connector will be required.**



Screen 23



Screen 24

### SPECIAL EVENTS SET-UP

To set-up Special Events, click on the Time Lock button on the opening screen, see screen 8. A window with the default configuration will appear, see screen 17. This window allows the set-up of Standard Week and Special Events Time Lock.

#### SPECIAL EVENTS

- By right clicking with the cursor in the first line on the Special Events screen, select Add, Delete or Delete All, see screen 25.
- Select the first box and select Add to set-up the first Special Event period. Select the correct Day and Date (1, July) from the drop down menu for the Closed Time. Then select the correct Day and Date from the drop down menu for the Open Time, see screen 26.
- Up to Twenty Special Events may be added (a maximum of four weeks) for each year.

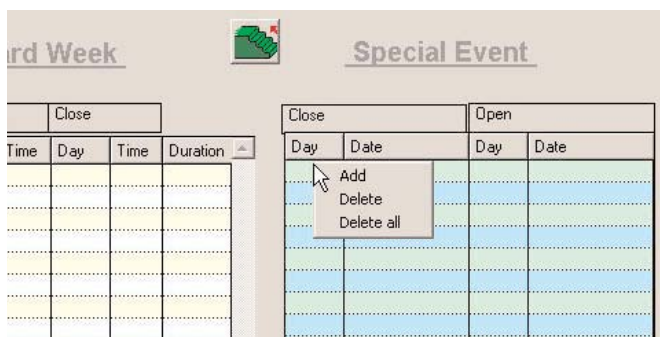
**NOTE: Special Events will repeat each year on that Calendar date. Floating Holidays, i.e. Thanksgiving, Labor Day, etc. cannot be programmed.**

### SENDING SPECIAL SET-UP TO THE LOGIC MODULE

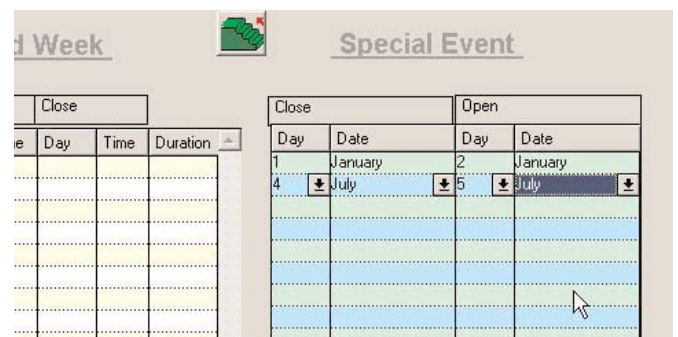
This function requires the use of the Logic Module Programming Cable (P/N 43097) and a Serial Interface Connector.

- ① Connect power to the Logic Module. Requires the use of a 9V battery. LA GARD recommends the use of Duracell™ or Eveready™ batteries.
- ② Plug Interface and cable into PC and open SMARTLINC Set-up software.
- ③ Connect the 43097 cable to the Logic Module through the port on the keypad.
- ④ Press the send button on the software, see screen 23.
- ⑤ The software will instruct you to activate the PC Link in the Master Menu on the Logic Module, see screen 23 & 24.
- ⑥ Press any key to power up SMARTLINC.
  - Display will show either "ENTER COMBO" or SELECT LOCK" when two or more locks are installed.
- ⑦ Hold down "zero" until the display shows "MASTER, X-X-X-X-X-X-X".
- ⑧ Enter the MASTER code.
- ⑨ Press the P button four (4) times to select PC Link, the display will show "PC LINK". Press the OK button to start communication with the PC.
- ⑩ On the screen the software will scroll through each Record number as it downloads, then it will show OK.
  - In order to exit from PC Link, press the "P" button three (3) times. When the screen reads "Do you want to QUIT?", press the "OK" button to exit.

**NOTE: If the computer does not have a serial port, a serial to USB connector will be required.**



Screen 25



Screen 26

### TROUBLESHOOTING

#### Transmission Error

- A communication error (check cable and battery connections and/or re-start Setup application)
- The lock is not in pre-setup mode (reset the lock with the reset box) LA GARD P/N 6066

#### No Answer

- A communication error (check cable and battery connections and/or re-start Setup application)
- Check COM port setting. Try selecting a different COM port and re-try.
- SMARTLINC is not in PC-Link mode (Activate PC Link in Master menu)